

## WHY THEY BOUGHT

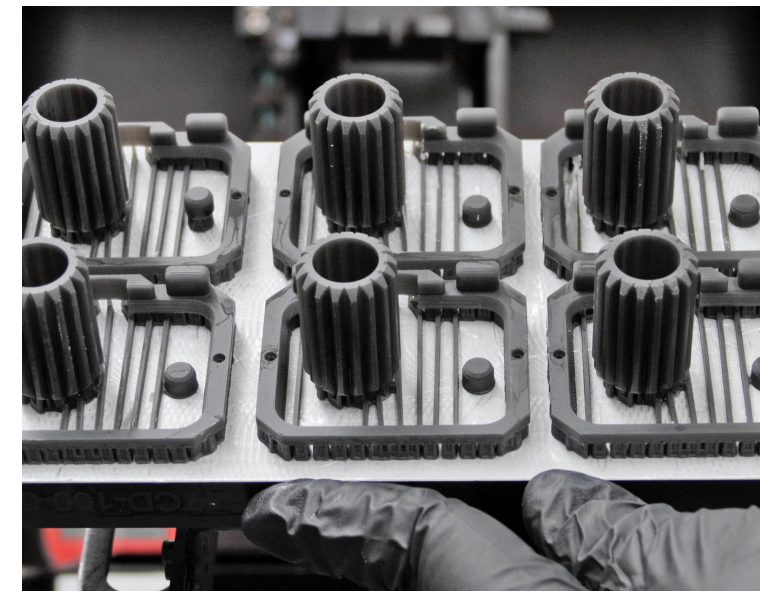
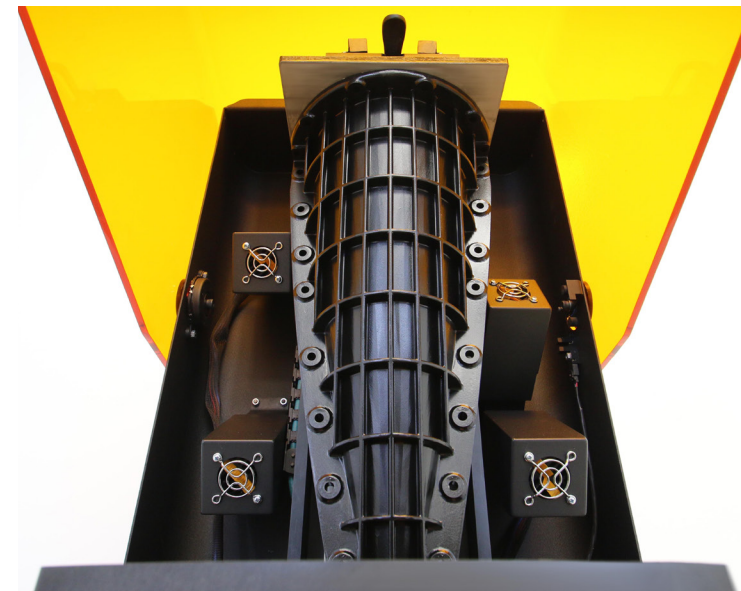
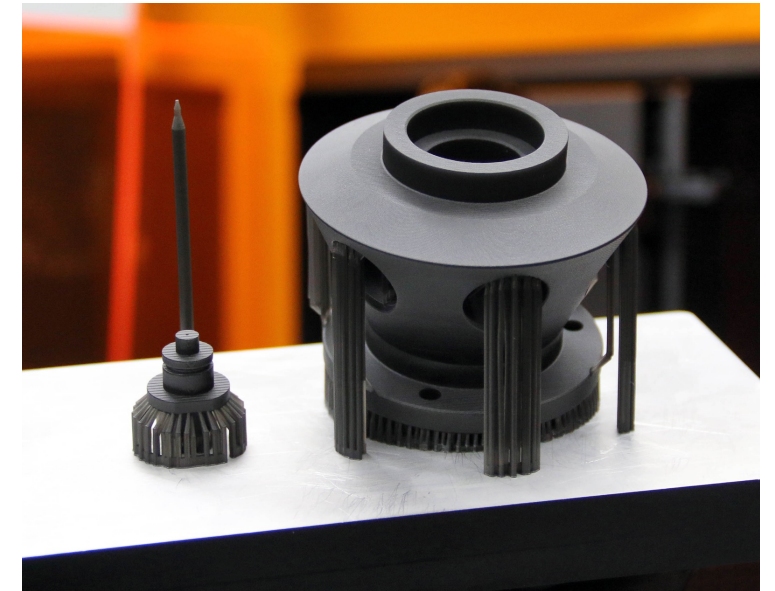
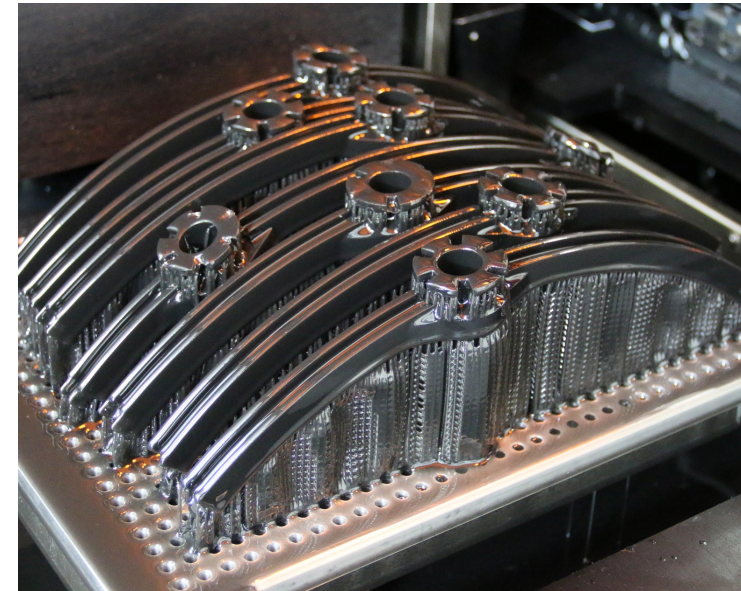
# 3D Composites



Location	Lake Stevens, WA
Application	Washington additive manufacturing specialist 3D Composites and partner ACS use envisionTEC manufacturing solutions to create parts for 747 jets, satellites, medical devices, and so much more.
Challenges	<ul style="list-style-type: none"><li>— Need for high-temperature resistant parts</li><li>— Need for durable elastomeric parts</li><li>— Need for high-precision parts</li><li>— Need for rapid design iteration</li></ul>

## ETEC SOLUTION

System	Envision One
Benefits	<ul style="list-style-type: none"><li>— Ability to print end-use components</li><li>— Eliminated tooling for small- to medium-volume production runs</li><li>— Ability to print large volume parts</li><li>— Enabled rapid design iteration</li><li>— High resolution and smooth surface finish reduced need for extensive post-processing</li><li>— Enabled faster turnaround of customer parts</li></ul>



**“We manufacture 3D printed parts for our customers that literally go from the reaches of outer-space all the way to 10,000 feet under the ocean and everywhere in-between because of the versatility of envisionTEC machines.”**

**Kim Gustafson, Vice President**